



## *Doctor Special Package: Transforming Healthcare Partnerships*

An innovative financing solution designed exclusively for medical professionals, hospitals, and nursing homes across India. Experience unprecedented savings whilst enhancing patient care with premium healthcare equipment.

# *The Challenge: Rising Medical Equipment Costs in India*

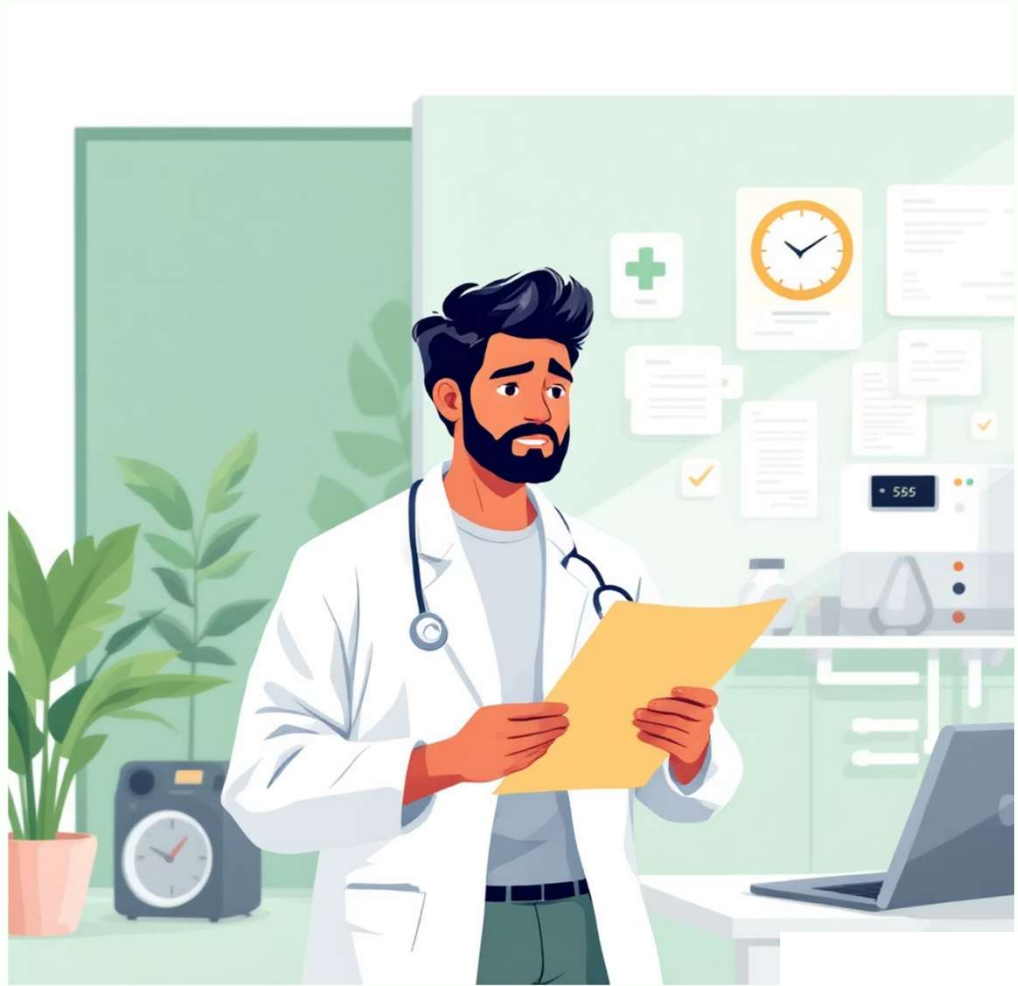
## **Financial Pressures**

Healthcare providers face mounting challenges with escalating equipment costs, strained budgets, and the constant need to upgrade technology to maintain quality patient care.

- Equipment costs increasing 15-20% annually
- Limited access to affordable financing
- Cash flow constraints affecting operations
- Compromised patient care due to outdated equipment

## **The Impact**

Many clinics and nursing homes struggle to invest in modern equipment, forcing difficult choices between financial stability and providing optimal healthcare services.



# *Introducing Divyeshine: Quality Healthcare Solutions*



## *Premium Quality*

Certified medical equipment meeting international standards whilst supporting Indian manufacturing excellence.



## *Trusted Partner*

Committed to empowering healthcare professionals with reliable, affordable solutions across India.

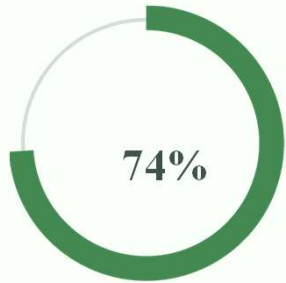


## *Swadeshi Pride*

Proudly Indian, helping keep our nation's wealth within our borders whilst boosting local economy.

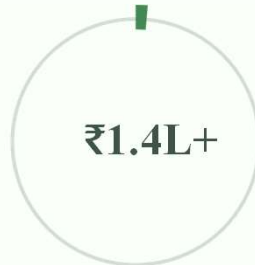


## Massive Savings: Up to 74% Discount for Medical Professionals



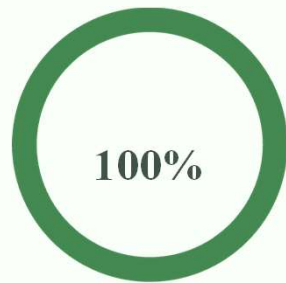
**Maximum Discount**

Unprecedented savings on premium Divyeshine products



**Average Savings**

Typical reduction in equipment costs per package



**Value Delivered**

Full product worth delivered immediately upon agreement

This exclusive offer transforms the economics of healthcare provision, enabling you to invest in cutting-edge equipment whilst maintaining healthy cash flow. Designed specifically for doctors, hospitals, and nursing homes committed to excellence.



## Flexible Payment Terms: ₹4,300 Initial, Then 11 Monthly Instalments

### Delivery Day

**₹4,300** initial payment. Full equipment delivered to your facility immediately.

1

### Total Investment

**₹49,400** over 12 months for ₹1,93,000 worth of equipment.

2

3

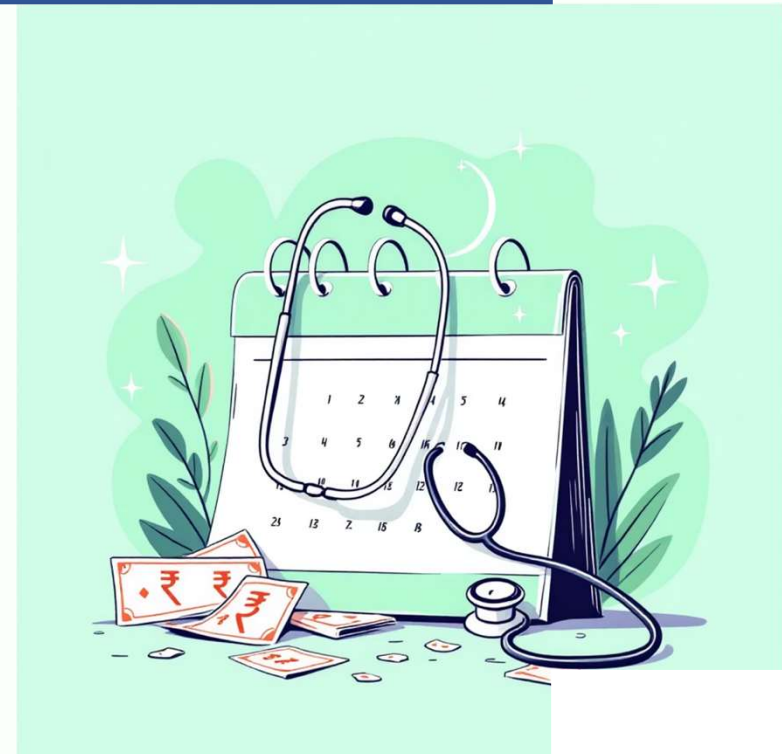
Months 1-11

**₹4,100 monthly via post-dated cheques. Easy, predictable payments.**

### Payment Made Simple

We understand the financial demands on healthcare providers. Our structured payment plan requires minimal upfront capital, with convenient post-dated cheque arrangements that align with your practice revenue cycles.

- No hidden fees or charges
- Transparent, straightforward terms
- 12-month credit facility included
- Manageable monthly commitments



# *Immediate Value: ₹1,93,000 Worth of Equipment Delivered Upfront*

## *Diagnostic Excellence*

Advanced diagnostic tools enabling accurate, efficient patient assessments from day one.

## *Monitoring Systems*

State-of-the-art monitoring equipment ensuring continuous patient safety and care quality.

## *Therapeutic Solutions*

Comprehensive treatment equipment supporting diverse clinical applications and specialties.

- 📌 **Start enhancing patient care immediately.** No waiting period—full equipment suite delivered upon agreement, allowing you to begin serving patients with advanced technology whilst managing payments over time.



## *Long-term Partnership Rewards: 50% Cashback After 10 Years*

### *Extraordinary Long-term Benefits*

Our commitment extends far beyond the initial transaction. After 10 years of continued partnership, we return **50% of your total payments**—a remarkable ₹24,700 cashback.

01

---

#### **Complete 12-month payments**

Total investment: ₹49,400

02

---

#### **Maintain 10-year partnership**

Continue using Divyeshine products

03

---

#### **Receive 50% cashback**

Get ₹24,700 returned after decade

### *True Partnership Value*

This isn't merely a transaction—it's a decade-long relationship built on mutual success. Your effective cost reduces to just ₹24,700 for ₹1,93,000 worth of equipment.









## *Success Stories: Real Impact on Healthcare Providers*

“

### *Dr. Rajesh Sharma, Mumbai Clinic*

"The Doctor Special Package transformed my practice. I upgraded all equipment with minimal initial investment, and the 74% savings allowed me to expand services. My patients receive better care, and my business thrives."

”

### *Sunrise Nursing Home, Pune*

"Initially sceptical about the cashback promise, but Divyeshine exceeded expectations. Ten years later, receiving 50% back felt surreal. This partnership genuinely supports healthcare providers whilst championing Swadeshi values."

”

**500+**

### *Healthcare Partners*

Doctors and facilities nationwide

**95%**

### *Satisfaction Rate*

Partners renewing agreements

**₹12Cr+**

### *Collective Savings*

Total value delivered to partners

## Next Steps: How to Join the Doctor Special Package Programme

### Verification & Approval

Quick verification of credentials and practice registration.  
Most applications approved within one week.

### Submit Application

Complete our simple application form with your practice details and equipment requirements. Our team reviews within 48 hours.

### Agreement Signing

Review and sign partnership agreement.  
Provide post-dated cheques for the 11 monthly instalments of ₹4,100.

### Equipment Delivery

Pay ₹4,300 initial amount. Receive full ₹1,93,000 worth of equipment delivered and installed at your facility.

### Ready to Transform Your Practice?

Join hundreds of healthcare providers already benefiting from this revolutionary programme. Contact our dedicated team today to begin your journey towards enhanced patient care and financial efficiency.

